

Training Module Section I

Installation of Mapserver for Web Map Application

1. Introduction

In this section, we will start by install Minnesota mapserver and other necessary environmental, libraries and software for Web Map application. And also datasets and demo application for this workshop will be automatically install and available as show in this document. A CD-ROM containing the complete set of tools required for publishing spatial data in the Web and deploying OGC WMS compliant application is included along with this document. The CD-Rom also contains an electronic Version of this training document that would enable the users to learn by examples

The installation is composed of three part

- FoxServ setup : to prepare a necessary environmental for Web Map application.
- Libwww.dll.zip : a necessary dll files
- Demo.exe : Self-extractor file for MNU Mapserver cgi and all demo application and necessary dataset for workshop.

2. Objective

- 2.1 To install MapServer and related FOSS packages using a simple installation
- 2.2 To install Demo Application and MapLab.

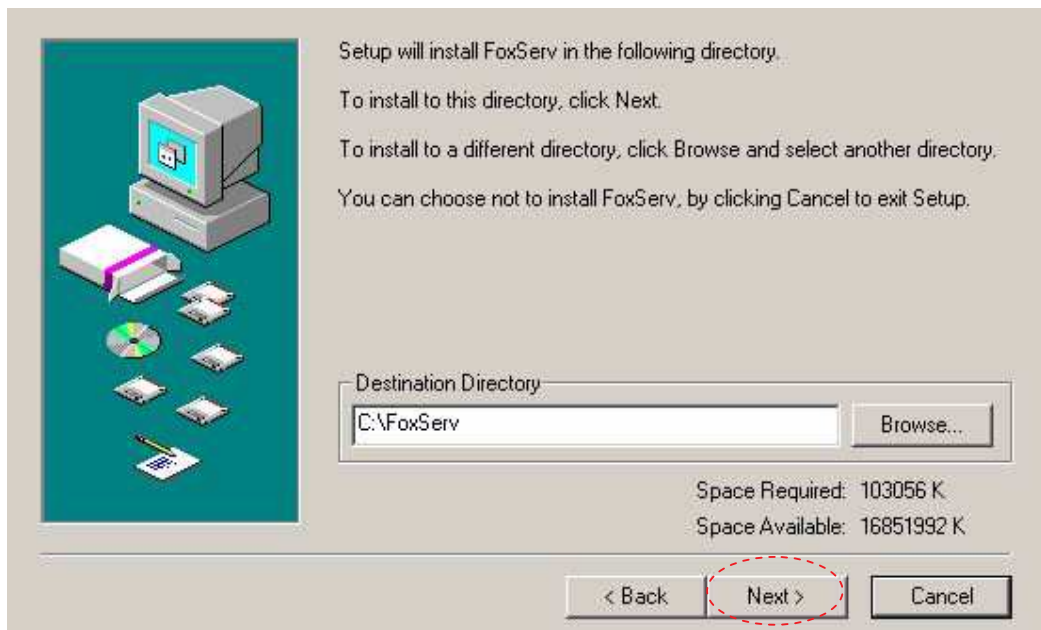
3. Procedure

FoxServ is an Apache / MySQL / PHP installer package for Windows. Unlike NuShpere or PHPTriad, FoxServ features the latest version of all included packages, user defined configuration during installation, PHP as a module, PEAR, and the Zend Optimizer. An easy installation for preparation a necessary environmental for Web Map application is available by FoxServ application.

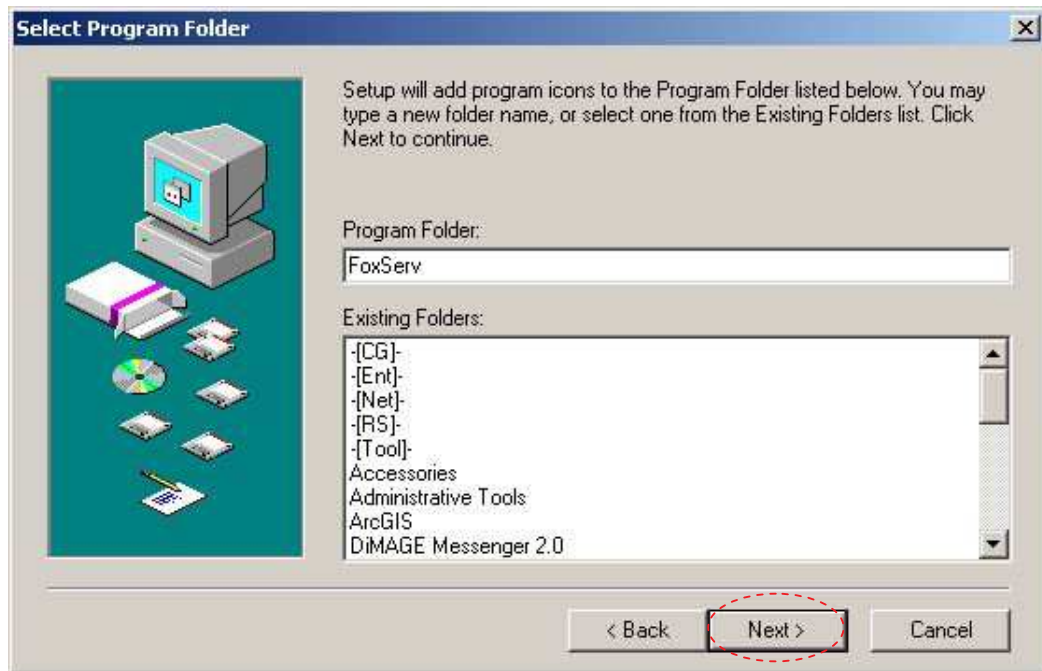
- 3.1 Execute a Foxserv.exe on workshop CD (\WindMapserver\setup\ FoxServ-3.0.exe)
- 3.2 A "welcome page" of the installation is shown then click *Next button*.



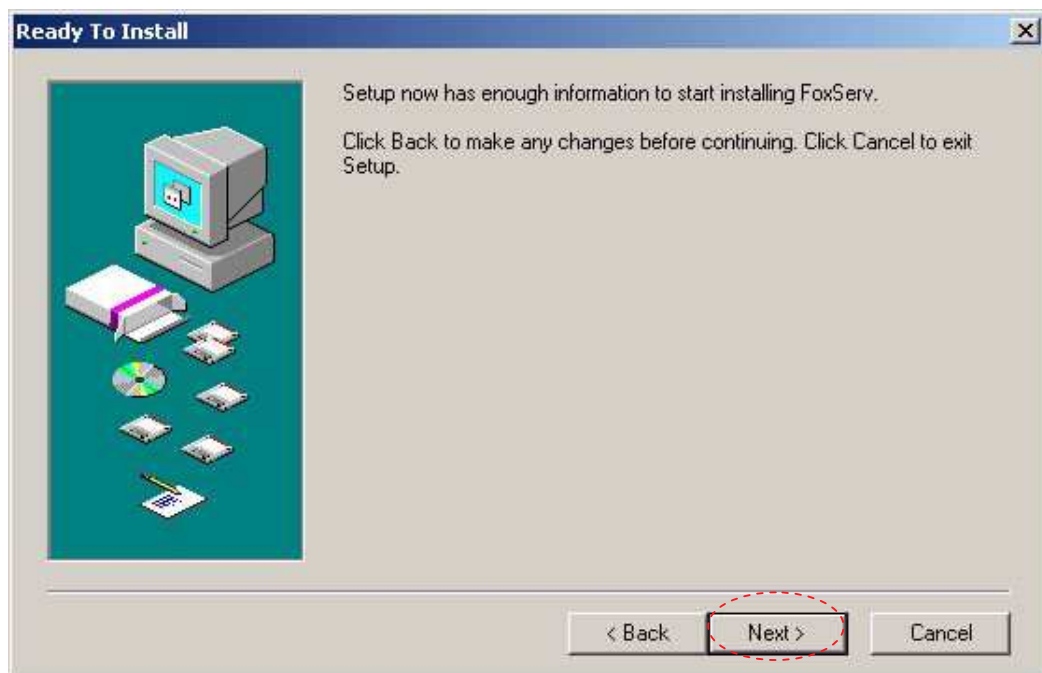
3.3 Enter C:\FoxServ\ for an installation path of FoxServ application then click *Next* button.



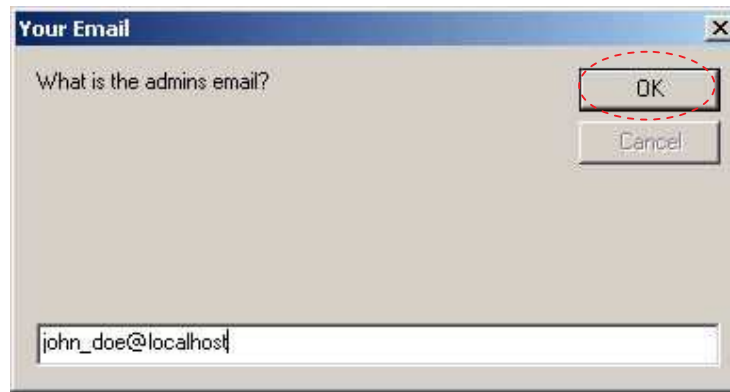
3.4 Click *Next* button for “Select Folder page”



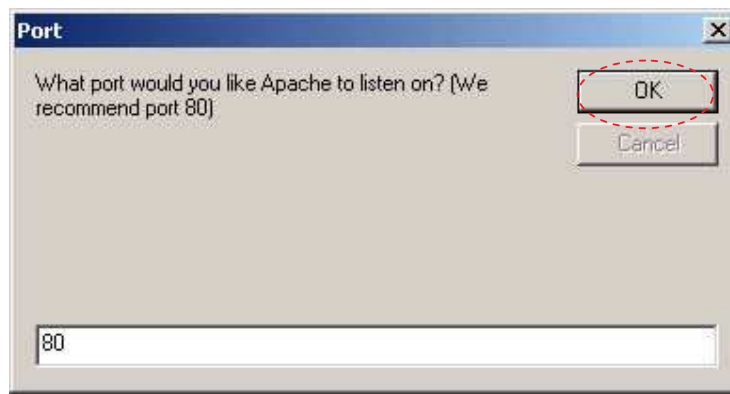
3.5 Click *Next* button for “Ready To Install page”



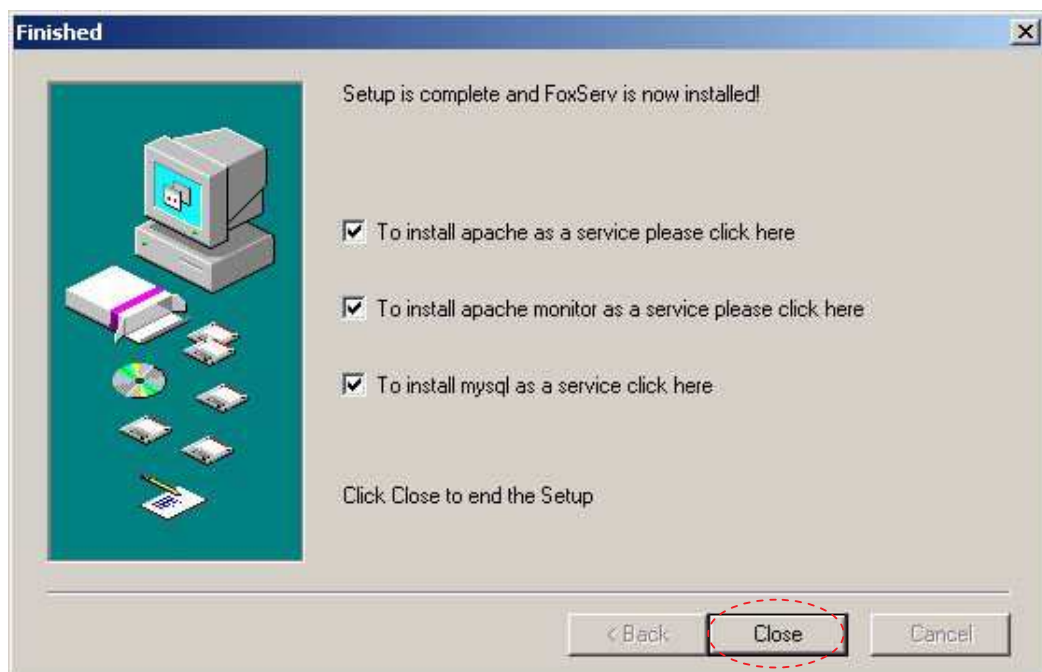
3.6 After copy file process is finished, then “Your email page” has a default value of admin email then click *Ok* button.



3.7 Then port 80 is a default value for Apache to listen port. Click *Ok Button*.



3.8 Then waiting until "Finished page" is shown. Please make sure that all of check boxes are checked. Then click *Close button*.

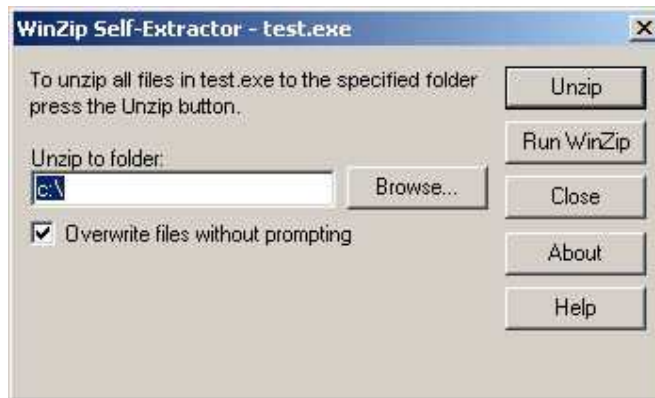


Then next is the installation of Libwww.dll which is pack of all necessary dll for running Web Map Application which will be extract to the directory of Windows system file. (C:\windows\system32\ or c:\winnt\system32\)

- 3.9 Open Libwww.dll.zip (\WindMapserver\setup\ Libwww.dll.zip) and extract all files to directory Windows system file. (C:\windows\system32\ or c:\winnt\system32\)

All demo application and complete dataset of workshop appear in this document are in demo.exe which is zip self-extractor file.

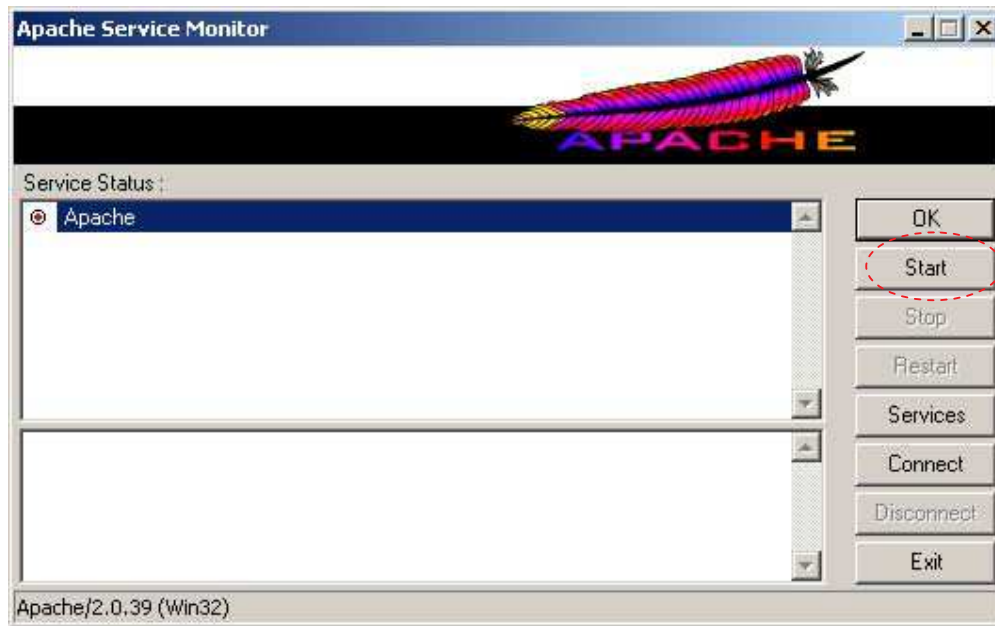
- 3.10 Execute demo.exe (\WindMapserver\setup\ demo.exe). An unzip older must be specified to c:\ (which is default value)



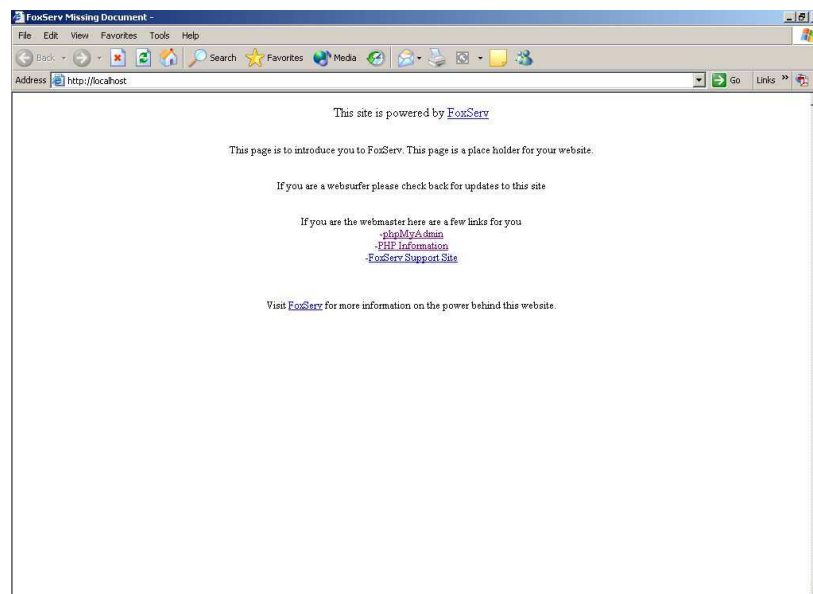
- 3.11 After complete an installation. An icon of apache will appear on task bar.



- 3.12 Right click on apache icon and select "Open Apache Monitor" and Start an apache service by click *Start button*. Then icon of apache will change from red to green color to indicate that Apache service is activated already.



3.13 To test apache service, Open an Internet Explorer and enter URL <http://localhost> . Then the default html page of FoxServ must be appear



4. Conclusion

In this training module Minnesota MapServer and related packages, libraries and demo applications have been installed and ready for further use.